



# V.22bis North American Embedded Modem 2420RD Designer's Guide

Rev. 1.0

March, 2001

Information contained in this document is provided in connection with Clare Inc. (Clare) Products and is believed to be accurate and reliable. However, Clare assumes no responsibility for this material's use, errors or emissions or for any infringements of patents or rights of third parties which may result from its use. These materials are provided "as is" without warranty of any kind, either expressed or implied. No license is granted by implication or otherwise under any patent or patent rights of Clare.

Product names or services mentioned in this publication are for identification purposes only, and may be trademarks of third parties. Third party names, brands, and marks are the property of their respective owners.

Clare's products are not intended for medical implantation or other direct life support applications where malfunction may result in direct harm, injury or death to a person.

**Table of Contents**

<b>2420RD Reference Design Information .....</b>	<b>3</b>
<b>Design Overview .....</b>	<b>4</b>
<b>Designed for Regulatory Compliance.....</b>	<b>4</b>
<b>Design Features.....</b>	<b>4</b>
<b>Typical User Applications for Design .....</b>	<b>4</b>
<b>Modem Description.....</b>	<b>5</b>
<i>Low Power Mode .....</i>	<i>5</i>
<i>Asynchronous and Synchronous Serial Data Interface .....</i>	<i>5</i>
<i>Phone Line Interface .....</i>	<i>5</i>
<b>PIN Definitions .....</b>	<b>6</b>
<b>Design Performance Parameters.....</b>	<b>7</b>
<b>Modem PCB Mechanical Dimensions.....</b>	<b>8</b>
<b>Bill of Materials .....</b>	<b>9</b>
<b>Assembly Information .....</b>	<b>10</b>
<b>Performance Test Data.....</b>	<b>11</b>
<b>Clare Worldwide Offices .....</b>	<b>13</b>

### 2420RD Reference Design Information

The Clare 2420RD reference material provides the necessary design information required to build a V22bis embedded socket modem for us with the North American telephone network.

Along with this Designers Guide, the 2420RD consists of the following information that is also available on Clare's website at [www.clare.com](http://www.clare.com) .

1. 2420RD Designers Guide (PDF)
2. 2420RD Schematic Diagram (PDF)
3. 2420RD Schematic in PADS
4. 2420RD PCB Gerber Files
5. 2420RD Assembly Views (PDF)
6. FCC Part 68 Test Report (PDF)
7. FCC Part 15 Test Report (PDF)

Further information about the modem chip itself and the "AT" command set used in Clare's 2420RD design can be found on TDK Semiconductor's website at [www.tsc.tdk.com](http://www.tsc.tdk.com) .

### Design Overview

The 2420RD reference design material provides the necessary information to manufacture a 2400bps embedded modem module for applications requiring a data communications link to the Public Switched Telephone Network (PSTN). Embedded Modem Modules (EMM) built using the 2420RD design information have been successfully tested for compliance to FCC and UL standards for the North American market. (Please refer to the 2430RD Designer's Guide for TBR-21 European applications)

The 2420RD modem module design produces a printed circuit board with dimensions of 1.45" x 1.85" (3.68cm x 4.70cm) that can be socketed or soldered into the host system controller board. OEMs can use the 2420RD to build embedded modem modules for a variety of low data rate applications such as a set top box billing modem or any remote data acquisition application. The 2420RD design supports a standard V.24 interface to the host Data Terminal Equipment (DTE).

### Designed for Regulatory Compliance

- FCC part 15B Compliance
- FCC part 68 Compliance
- UL Tested

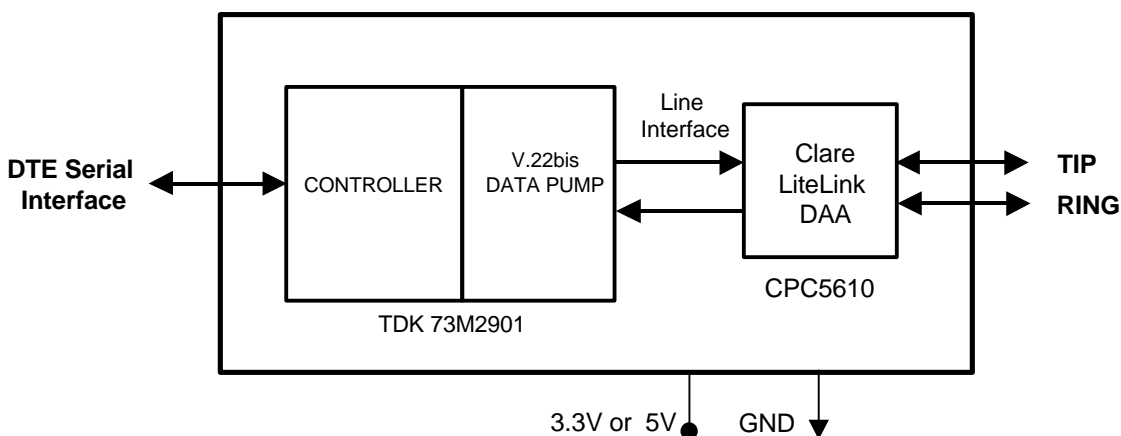
### Design Features

- Full Duplex 2400bps Design
- Small 1.45" x 1.85" (3.68cm x 4.70cm) PCB
- Low Power Consumption and Sleep Mode
- V.24 DTE Interface
- 3.3V or 5.0V Operation
- Data Speed:
  - V.22bis – 2400bps
  - V.22, Bell 212 – 1200bps
  - V.21, Bell 103 – 300bps
  - V.23, Bell 1200/75bps
- Dynamic Range – 9dBm to –43dBm
- Caller ID Capability

### Typical User Applications for Design

- Vending / Gaming Machines
- Set Top Box Billing Modem
- Direct Broadcast Satellite
- Utility Meters
- Point of Sales Terminals
- Remote Diagnostics
- Remote Telemetry
- Remote Monitoring
- Embedded Applications

**2420 Embedded Modem Functional Block Diagram**



### Modem Description

The 2420RD reference design architecture is based on a highly integrated TDK 73M2901 chip that includes the CPU, AFE, MAC, ROM, RAM, and UART that is controlled through the TDK "AT" like command set. Detailed information and support on this chipset can be found on the TDK Semiconductor website at [www.tsc.tdk.com](http://www.tsc.tdk.com). The 2420RD EMM design also utilizes a compact Clare CPC5610 optical silicon DAA configured for North American PSTN operation. The Clare CPC5610 DAA eliminates the on-board coupling transformer along with much of the regulatory agency certification risk usually associated with dial up modems. EMMs built using the 2420RD material have been successfully tested to be fully compliant with the FCC part 68 standard for interface the telephone network. Clare's 2420RD EMM reference design is capable of being powered by either a single +3.3V or +5.0V power supply source and supports automatic standby idle mode. EMMs based upon the 2420RD will also accept a request to power down from the DTE via hardware control.

### Low Power Mode

The 2420RD design supports a low power mode. If the low power standby option is

enabled the modem module will go into a power saving mode when idle. The on board oscillator will be running, clocks will be supplied to the modem's UART, timers and interrupt blocks; but no clocks will be supplied to the CPU. Instruction processing and activity on the internal busses is halted. Normal operation is resumed when an interruption such as DTR, RING, or a character send to the modem occurs.

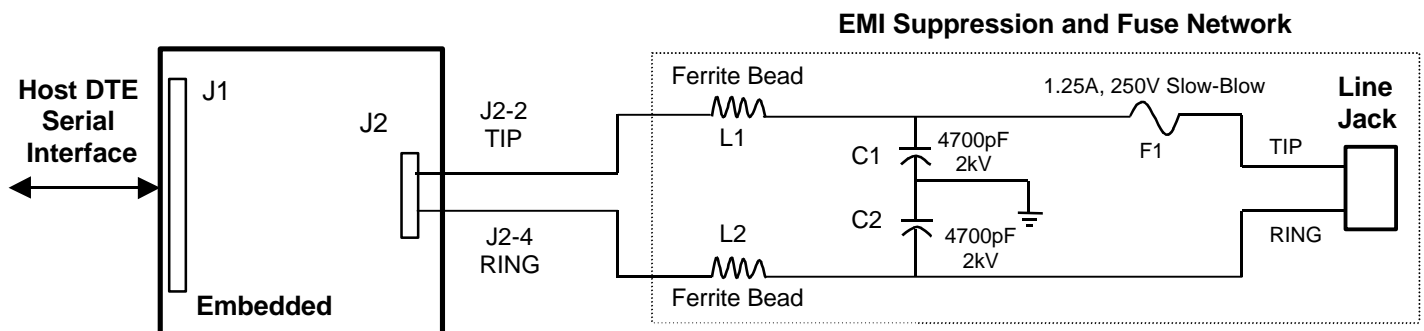
### Asynchronous and Synchronous Serial Data Interface

The serial data interface consists of the TXD and RXD data paths (LSBit shifted in and out first, respectively); and the TXC and RXC serial clock outputs for synchronous data mode; CTS/RTS flow control; DCD, DSR and DTR. In synchronous mode, the data is passed at the bit rate (tolerance is +1%, -2.5%).

### Phone Line Interface

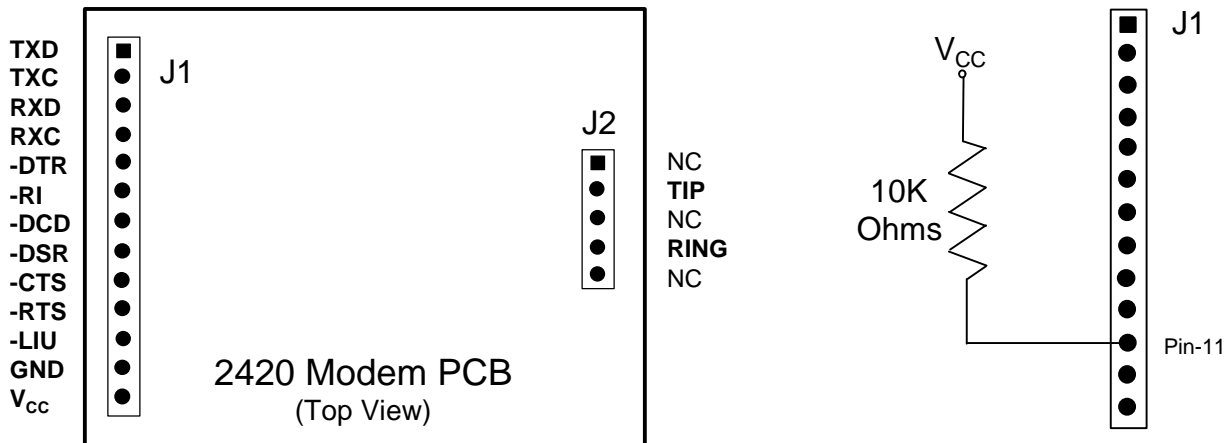
The 2420RD design connects to the telephone line via the TIP and RING pair of signal lines located on J2 of the EMM. An additional EMI suppression and fuse network connected to the TIP and RING signal lines is recommended.

### Recommended EMI Suppression and Fuse Network



### PIN Definitions

PIN NAME	PIN NUMBER	I/O Type	Description
TXD	J1-1	I	Serial data input from DTE
TXC	J1-2	O	Transmit data synchronous clock
RXD	J1-3	O	Serial output to DTE
RXC	J1-4	O	Receive data synchronous clock
-DTR	J1-5	I	External interrupt - DTE DTR signal input
-RI	J1-6	O	Ring Indicator
-DCD	J1-7	O	Data Carrier Detect
-DSR	J1-8	O	Data Set Ready
-CTS	J1-9	O	Clear to Send
-RTS	J1-10	I	Request to Send
-LIU	J1-11	I/O	Line in use. This pin can be optionally configured as an active low detect pin for us in "Line in Use" or "Parallel-Pick-Up".
GND	J1-12	I	Connect to digital ground system
V <sub>CC</sub>	J1-13	I	Positive supply voltage of 3.3V or 5.0V nominal
N.C.	J2-1	-	No connect
TIP	J2-2	I/O	To telephone line TIP connection via optional EMI suppression network and fuse.
N.C.	J2-3	-	No connect
RING	J2-4	I/O	To telephone line RING connection via optional EMI suppression network and fuse.
N.C.	J2-5	-	No Connection



If LIU is not used for "Line in Use" or "Parallel-Pick-Up" detection, it is advised to pull up Pin J1-11 as shown here:

### Design Performance Parameters

#### Absolute Maximum Ratings (@ 25°C)

PARAMETER	MIN	MAX	UNITS
Isolation Voltage		1500	$V_{RMS}$
Tip/Ring Current	12	60	mA
Operating Temperature	-20	+85	°C
Storage Temperature	-40	+125	°C
Relative Humidity (Non-Condensing)	10	85	%
Soldering Duration			°C

#### DC Characteristics DTE Interface

(TXD, TXC, RXD, RXC, -DTR, -RI, DCD, -DSR, -CTS, -RTS, -LIU, GND, VCC)

PARAMETER	SYMBOL	MIN	TYP	MAX	UNIT	CONDITION
Input Low voltage	$V_{IL}$	- 0.5	-	$0.2V_{CC}$	V	-
Input High voltage	$V_{IH}$	$0.5V_{CC}$	-	$V_{CC} + 0.5$	V	
Output Low voltage	$V_{OL}$	-	-	0.45	V	$I_{OL} = 4mA$
Output High voltage	$V_{OH}$	$V_{CC} - 0.45$	-	-	V	$I_{OH} = -4mA$
Input Leakage Current	$I_{IH}$	1	-	30	mA	$GND < V_{IN} < V_{CC}$

#### DC Characteristics 5V Operations

PARAMETER	SYMBOL	MIN	TYP	MAX	UNIT	CONDITION
Max Power Supply Current	$I_{DD11}$		40.6		mA	Normal Mode
Max Power Supply Current	$I_{DD2}$		16.6		mA	Idle Mode
Max Power Supply Current	$I_{DD3}$	-	5.6		mA	Down Mode

#### DC Characteristics 3.3V Operations

PARAMETER	SYMBOL	MIN	TYP	MAX	UNIT	CONDITION
Max Power Supply Current	$I_{DD11}$		27.2		mA	Normal Mode
Max Power Supply Current	$I_{DD2}$		12.2		mA	Idle Mode
Max Power Supply Current	$I_{DD3}$	-	5.2		mA	Down Mode



### Bill of Materials

A complete list of the materials used in the 2420RD embedded modem reference design can be found below. The exact costs for the material will vary depending upon the quantities purchased and variable market conditions. In general, the material cost of the 2420RD should be under \$8.00 US.

March, 2001

Rev.C.

#### Clare 2420RD BOM V.22bis North American/Japan 2400 Embedded Modem Design

QTY	REF DES	DEVICE	PKG	DESC	PKG TYPE	VALUE	VOLT	WATT	TOL	CLARE NO	VENDOR	VENDOR NO
9	C1-C4, C9,C15 C16,C18,C19	CAPV 603	CHIP	CAP	CC0603	0.1	16V		10%	SKB271	Tecate	CMC-016/104KX0603T
2	C6-C7	CAPH 1808	CHIP	CAP	CC1808	220PF	2000V		10%	SKB297	Nova Cap	1808N221K202NT
1	C10	CAPH 1206	CHIP	CAP	CC1206	0.01	500V		10%	SKB299	Tecate	CMC-500/105JX1206T
1	C11	CAPV 603	CHIP	CAP	CC0805	0.027	16V		10%	SKB296	Tecate	CMC-050/273JX0805T
1	C13	CAPV 603	CHIP	CAP	CC0603	27pF	50V		10%	SKB298	Tecate	CMC-050/270JX0603T
1	C14	CAPV 603	CHIP	CAP	CC0603	33pF	50V		10%	SKB276	Tecate	CMC-050/330JN0603T
3	C17, C20-C21	CAPV 3216	CHIP	CAP	3216	10	6.3V		10%	SKB218	Tecate	522-016/100KTRB
1	DB1	SIZB60	BR R	ECT	SHINDENBRI		600V			SKB227	SHINDENGEN	SIZB60
1	J1	SIP-13P	CONN	13PIN	SIP-13P					SKB300	Com Con Connectors	DS1-140/220/140-13G2
1	J2	SIP-5P	CONN	5PIN	SIP-5P					SKB301	Com Con Connectors	DS1-140/220/140-05G2
1	Q1	CPC5602C	PWR	MOS	SOT223		350V			CPC5602C.2	Clare	CPC5602
4	R1,R2,R24,R26	RESV 603	CHIP	RES	CR0603	10K		1/16W	1%	SKB194	Meritek	CR16103J
1	R3	RESV 603	CHIP	RES	CR0603	20k		1/16W	1%	SKB195	Meritek	CR16203J
1	R4	RESH 603	CHIP	RES	CR0603	80.6K		1/16W	1%	SKB310	IMS	RCI-0603-8062JT
1	R5	RESV 603	CHIP	RES	CR0603	127K		1/16W	1%	SKB302	IMS	RCI-0603-1273JT
1	R6	RESV 603	CHIP	RES	CR0805	1.5M		1/16W	1%	SKB313	IMS	RCI-0805-1504JT
2	R7,R8	RESH 603	CHIP	RES	CR0805	3.6M		1/10W	1%	SKB314	IMS	RCI-0805-3604JT
1	R9	RESH 603	CHIP	RES	CR0603	42.2K		1/16W	1%	SKB303	IMS	RCI-0603-4223FT
2	R10,R11	RESV 603	CHIP	RES	CR0603	1M		1/16W	1%	SKB304	IMS	RCI-0603-1004JT
1	R12	RESV 603	CHIP	RES	CR0603	68.1		1/16W	1%	SKB305	IMS	RCI-0603-68R1FT
1	R13	RESV 805	CHIP	RES	CR0805	8.2		1/8W	1%	SKB315	IMS	RCI-0805-8R2OFT
3	R14,R17,R27	RESH 603	CHIP	RES	CR0603	0		1/16W	1%	SKB267	Meritek	CR16000J
2	R15,R16	RESH 603	CHIP	RES	CR0603	200K		1/16W	1%	SKB255	Meritek	CR16204J
1	R18	RESH 603	CHIP	RES	CR0603	1.69M		1/16W	1%	SKB311	IMS	RCI-0603-1694FT
1	R19	RESV 603	CHIP	RES	CR0603	4.7		1/16W	1%	SKB306	IMS	RCI-0603-4R70JT
1	R20	RESV 603	CHIP	RES	CR1206	13M		1/4W	1%	SKB317	IMS	RCI-1206-1305JT
1	R21	RESH 603	CHIP	RES	CR0603	270		1/16W	1%	SKB307	IMS	RCI-0603-2700JT
1	R22	RESH 603	CHIP	RES	CR0603	150		1/16W	1%	SKB308	IMS	RCI-0603-1500JT
1	R23	RESH 603	CHIP	RES	CR0603	300		1/16W	1%	SKB309	IMS	RCI-0603-3000JT
1	R28	RESH 603	CHIP	RES	CR0603	150K		1/16W	1%	SKB312	IMS	RCI-0603-1503JT
1	SP1	P3100SB	TRAN	SUPP	DO-214AA	350V				SKB223	TECCOR	P3100SB
1	U1	CPC5610	DAA	IC	DIP32 SOL					CPC5610A.2	Clare	CPC5610A
1	U2		DSP	IC						SKS369	TDK	73M2901
1	Y1		XTAL	OSC		11.0592M				SKB318	Ralton	AS-11.0592-18-Fund-Ext-SMD-T

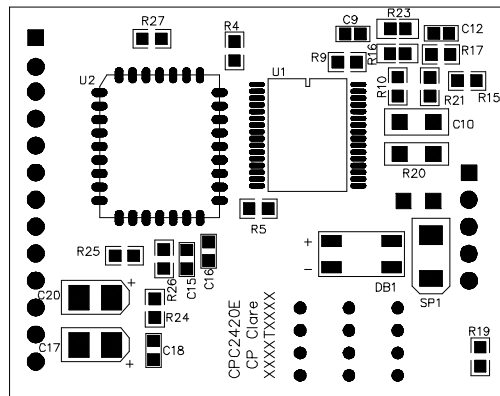
### Assembly Information

Basic PCB assembly drawings are shown below with further details available in the PCB files included as part of the 2420RD design package.

#### Assembly Instruction Notes:

1. Note orientation of U1, U2, C17, C20, and DB1
2. J1 and J2 are soldered on the bottom layer and soldered on the top layer
3. C8, C12, C22 and R25 are not used

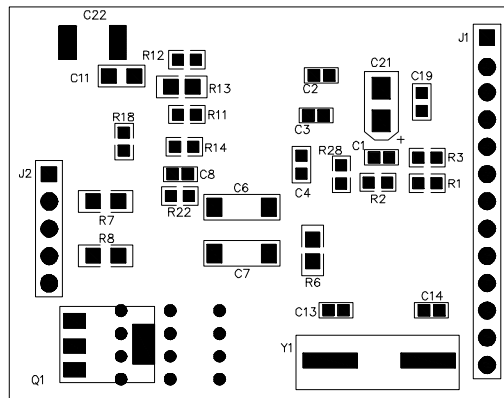
TOP LAYER ASSEMBLY INSTRUCTIONS



TOP LAYER

NOT USED  
C12, R25

BOTTOM LAYER ASSEMBLY INSTRUCTIONS



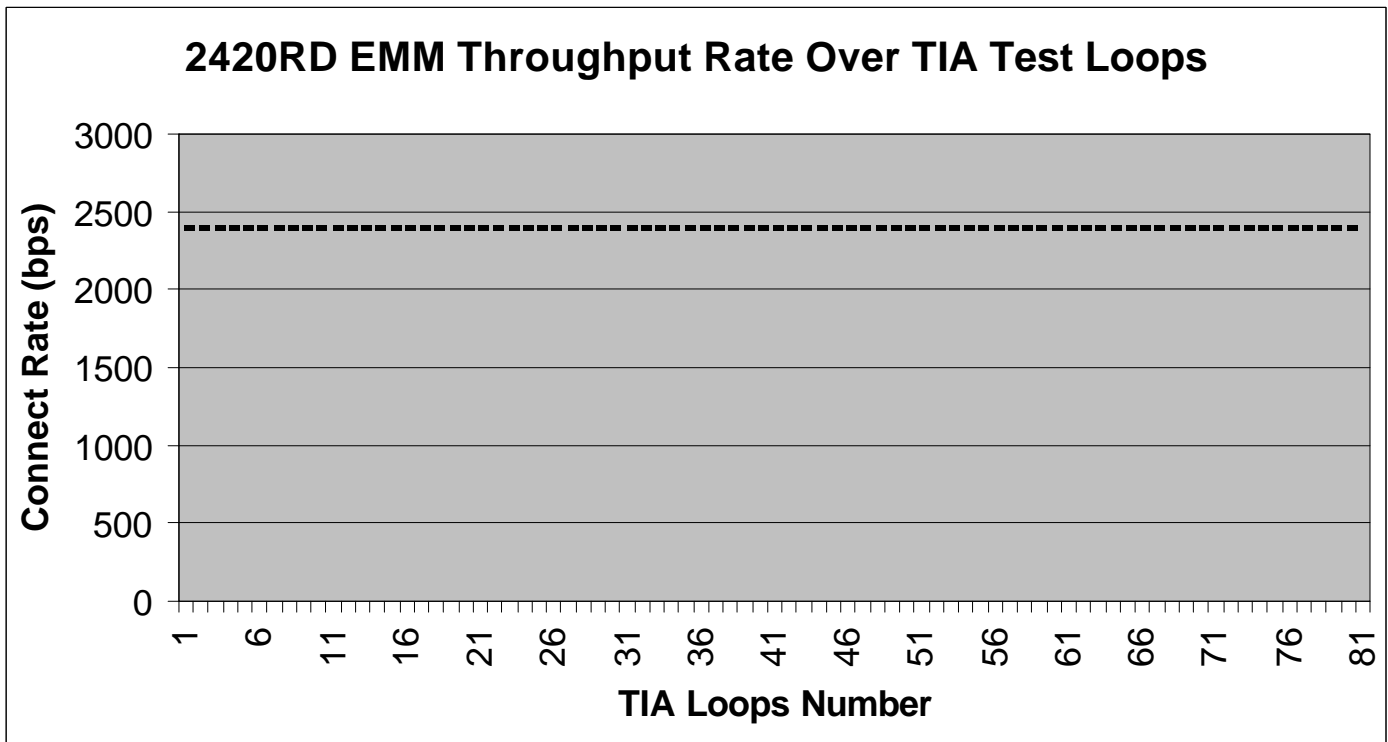
BOTTOM LAYER

NOT USED  
C8, C22

### Performance Test Data

Clare has performed automated testing of embedded modems built using the 2420RD design material using TAS Telephone Network Emulators. The TAS Emulators test loops are compatible with the testing standards from the EIA/TIA, NTT, and RITT and incorporate built-in setup files for common exchange and impairment conditions. Each TAS Emulator test loop has been assigned a percentage of how often it occurs in the real world PSTN network allowing the TAS Emulator to be set up to perform many types of tests. Each loop is given an EIA and TIA identifier, for example our second line tested is the TIA case I9A, LoopB=EIA1. A good source for further information can be found in TIA document TR30.3, or the TAS web site [www.taskit.com](http://www.taskit.com) by going to the support pull down menu and then to application notes.

For modem designers, one of the more common tests performed is data throughput over the emulated PSTN test loops. Throughput testing checks the complete modem design by providing the initial connection speed information along with what the actual rate or throughput the data is transferred across the PSTN test loop. Therefore, TAS Emulator throughput test data provides information about the complete modem including the line interface or data access arrangement (DAA), the resolution of the codec, and most importantly the DSP's ability to compress and error correct the data. Data presented in the chart below represents the results Clare obtained form EMM built with the 2420RD design material. The actual raw test data can be found on the following page.



Test Loop	Description	Chars (B)	Chars/Sec (B)	Seconds (B)	% Complete (B)	Connect Response B
1	Clean case, Loop B = Null	131072	2.40E+02	546	100	2400
2	TIA case I9A, Loop B = EIA1	131072	2.40E+02	546	100	2400
3	TIA case I9A, Loop B = EIA3	131072	2.40E+02	546	100	2400
4	TIA case I9A, Loop B = EIA4	131072	2.40E+02	546	100	2400
5	TIA case I9A, Loop B = EIA5	131072	2.40E+02	546	100	2400
6	TIA case I9A, Loop B = EIA6	131072	2.40E+02	546	100	2400
7	TIA case I9B, Loop B = EIA1	131072	2.40E+02	546	100	2400
8	TIA case I9B, Loop B = EIA3	131072	2.40E+02	546	100	2400
9	TIA case I9B, Loop B = EIA4	131072	2.40E+02	546	100	2400
10	TIA case I9B, Loop B = EIA5	131072	2.40E+02	546	100	2400
11	TIA case I9B, Loop B = EIA6	131072	2.40E+02	546	100	2400
12	TIA case I9C, Loop B = EIA1	131072	2.40E+02	546	100	2400
13	TIA case I9C, Loop B = EIA3	131072	2.40E+02	546	100	2400
14	TIA case I9C, Loop B = EIA4	131072	2.40E+02	546	100	2400
15	TIA case I9C, Loop B = EIA5	131072	2.40E+02	546	100	2400
16	TIA case I9C, Loop B = EIA6	131072	2.40E+02	546	100	2400
17	TIA case I9D, Loop B = EIA1	131072	2.40E+02	546	100	2400
18	TIA case I9D, Loop B = EIA3	131072	2.40E+02	546	100	2400
19	TIA case I9D, Loop B = EIA4	131072	2.40E+02	546	100	2400
20	TIA case I9D, Loop B = EIA5	131072	2.40E+02	546	100	2400
21	TIA case I9D, Loop B = EIA6	131072	2.40E+02	546	100	2400
22	TIA case I10A, Loop B = EIA1	131072	2.40E+02	546	100	2400
23	TIA case I10A, Loop B = EIA3	131072	2.40E+02	546	100	2400
24	TIA case I10A, Loop B = EIA4	131072	2.40E+02	546	100	2400
25	TIA case I10A, Loop B = EIA5	131072	2.40E+02	546	100	2400
26	TIA case I10A, Loop B = EIA6	131072	2.40E+02	546	100	2400
27	TIA case I10B, Loop B = EIA1	131072	2.40E+02	546	100	2400
28	TIA case I10B, Loop B = EIA3	131072	2.40E+02	546	100	2400
29	TIA case I10B, Loop B = EIA4	131072	2.40E+02	546	100	2400
30	TIA case I10B, Loop B = EIA5	131072	2.40E+02	546	100	2400
31	TIA case I10B, Loop B = EIA6	131072	2.40E+02	546	100	2400
32	TIA case I10C, Loop B = EIA1	131072	2.40E+02	546	100	2400
33	TIA case I10C, Loop B = EIA3	131072	2.40E+02	546	100	2400
34	TIA case I10C, Loop B = EIA4	131072	2.40E+02	546	100	2400
35	TIA case I10C, Loop B = EIA5	131072	2.40E+02	546	100	2400
36	TIA case I10C, Loop B = EIA6	131072	2.40E+02	546	100	2400
37	TIA case I10D, Loop B = EIA1	131072	2.40E+02	546	100	2400
38	TIA case I10D, Loop B = EIA3	131072	2.40E+02	546	100	2400
39	TIA case I10D, Loop B = EIA4	131072	2.40E+02	546	100	2400
40	TIA case I10D, Loop B = EIA5	131072	2.40E+02	546	100	2400
41	TIA case I10D, Loop B = EIA6	131072	2.40E+02	546	100	2400
42	TIA case I11A, Loop B = EIA1	131072	2.40E+02	546	100	2400
43	TIA case I11A, Loop B = EIA3	131072	2.40E+02	546	100	2400
44	TIA case I11A, Loop B = EIA4	131072	2.40E+02	546	100	2400
45	TIA case I11A, Loop B = EIA5	131072	2.40E+02	546	100	2400
46	TIA case I11A, Loop B = EIA6	131072	2.40E+02	546	100	2400
47	TIA case I11B, Loop B = EIA1	131072	2.40E+02	546	100	2400
48	TIA case I11B, Loop B = EIA3	131072	2.40E+02	546	100	2400
49	TIA case I11B, Loop B = EIA4	131072	2.40E+02	546	100	2400
50	TIA case I11B, Loop B = EIA5	131072	2.40E+02	546	100	2400
51	TIA case I11B, Loop B = EIA6	131072	2.40E+02	546	100	2400
52	TIA case I11C, Loop B = EIA1	131072	2.40E+02	546	100	2400
53	TIA case I11C, Loop B = EIA3	131072	2.40E+02	546	100	2400
54	TIA case I11C, Loop B = EIA4	131072	2.40E+02	546	100	2400
55	TIA case I11C, Loop B = EIA5	131072	2.40E+02	546	100	2400
56	TIA case I11C, Loop B = EIA6	131072	2.40E+02	546	100	2400
57	TIA case I11D, Loop B = EIA1	131072	2.40E+02	546	100	2400
58	TIA case I11D, Loop B = EIA3	131072	2.40E+02	546	100	2400
59	TIA case I11D, Loop B = EIA4	131072	2.40E+02	546	100	2400
60	TIA case I11D, Loop B = EIA5	131072	2.40E+02	546	100	2400
61	TIA case I11D, Loop B = EIA6	131072	2.40E+02	546	100	2400
62	TIA case I12A, Loop B = EIA1	131072	2.40E+02	546	100	2400
63	TIA case I12A, Loop B = EIA3	131072	2.40E+02	546	100	2400
64	TIA case I12A, Loop B = EIA4	131072	2.40E+02	546	100	2400
65	TIA case I12A, Loop B = EIA5	131072	2.40E+02	546	100	2400
66	TIA case I12A, Loop B = EIA6	131072	2.40E+02	546	100	2400
67	TIA case I12B, Loop B = EIA1	131072	2.40E+02	546	100	2400
68	TIA case I12B, Loop B = EIA3	131072	2.40E+02	546	100	2400
69	TIA case I12B, Loop B = EIA4	131072	2.40E+02	546	100	2400
70	TIA case I12B, Loop B = EIA5	131072	2.40E+02	546	100	2400
71	TIA case I12B, Loop B = EIA6	131072	2.40E+02	546	100	2400
72	TIA case I12C, Loop B = EIA1	131072	2.40E+02	546	100	2400
73	TIA case I12C, Loop B = EIA3	131072	2.40E+02	546	100	2400
74	TIA case I12C, Loop B = EIA4	131072	2.40E+02	546	100	2400
75	TIA case I12C, Loop B = EIA5	131072	2.40E+02	546	100	2400
76	TIA case I12C, Loop B = EIA6	131072	2.40E+02	546	100	2400
77	TIA case I12D, Loop B = EIA1	131072	2.40E+02	546	100	2400
78	TIA case I12D, Loop B = EIA3	131072	2.40E+02	546	100	2400
79	TIA case I12D, Loop B = EIA4	131072	2.40E+02	546	100	2400
80	TIA case I12D, Loop B = EIA5	131072	2.40E+02	546	100	2400
81	TIA case I12D, Loop B = EIA6	131072	2.40E+02	546	100	2400

### Clare Worldwide Offices

#### AMERICAS

**Clare Headquarters**  
78 Cherry Hill Drive  
Beverly, MA 01915-1048  
Tel: 1-978-524-6700  
Fax: 1-978-524-4700  
Toll Free: 1-800-27-CLARE

Clare Switch Division  
4315 Earth City Expressway  
Earth City, MO 63045  
Tel: 1-314-770-1832  
Fax: 1-314-770-1812

Clare Micronix Division  
145 Columbia  
Aliso Viejo, CA 92656-1490  
Tel: 1-949-831-4622  
Fax: 1-949-831-4628

#### SALES OFFICES

##### Eastern Region

Clare, Inc.  
603 Apache Court  
Mahwah, NJ 07430  
Tel: 1-201-236-0101  
Fax: 1-201-236-8685

##### Central Region

Clare Canada Ltd.  
3425 Harvester Road  
Suite 202  
Burlington, Ontario L7N 3N1  
Tel: 1-905-333-9066  
Fax: 1-905-333-1824

##### Western Region

Clare, Inc.  
1852 West 11th Street #348  
Tracy, CA 95376  
Tel: 1-209-832-4367  
Fax: 1-209-832-4732

##### Canada

Clare Canada Ltd.  
3425 Harvester Road  
Suite 202  
Burlington, Ontario L7N 3N1  
Tel: 1-905-333-9066  
Fax: 1-905-333-1824

#### EUROPE

**European Headquarters**  
CP Clare nv  
Bampslaan 17  
B-3500 Hasselt (Belgium)  
Tel: +32-11-300860  
Fax: +32-11-300890

##### France

Lead Rep  
99 route de Versailles  
91160 Champlan  
France  
Tel: +33-1-69-79-93-50  
Fax: +33-1-69-79-93-59

##### Germany

ActiveComp Electronic GmbH  
Mitterstrasse 12  
85077 Manching  
Germany  
Tel: +49-8459-3214 0  
Fax: +49-8459-3214 29

##### Italy

C.L.A.R.E.s.a.s.  
Via C. Colombo 10/A  
I-20066 Melzo (Milano)  
Tel: +39-02-95737160  
Fax: +39-02-95738829

##### Sweden

Clare Sales  
Comptron AB  
Box 167  
S-16329 Spånga  
Tel: +46-862-10370  
Fax: +46-862-10371

##### United Kingdom

Clare UK Sales  
Marco Polo House  
Cook Way Bindon Road  
Taunton  
UK-Somerset TA2 6BG  
Tel: +44-1-823 352541  
Fax: +44-1-823 352797

#### ASIA PACIFIC

##### Asian Headquarters

Clare  
Room 1016, Chia-Hsin, Bldg II,  
10F, No. 96, Sec. 2  
Chung Shan North Road  
Taipei, Taiwan R.O.C.  
Tel: 886-2-2523-6368  
Fax: 886-2-2523-6369

<http://www.clare.com>

Information contained in this document is provided in connection with Clare Inc. (Clare) Products and is believed to be accurate and reliable. However, Clare assumes no responsibility for this material's use, errors or emissions or for any infringements of patents or rights of third parties which may result from its use. These materials are provided "as is" without warranty of any kind, either expressed or implied. No license is granted by implication or otherwise under any patent or patent rights of Clare.

Product names or services mentioned in this publication are for identification purposes only, and may be trademarks of third parties. Third party names, brands, and marks are the property of their respective owners.

Clare's products are not intended for medical implantation or other direct life support applications where malfunction may result in direct harm, injury or death to a person.